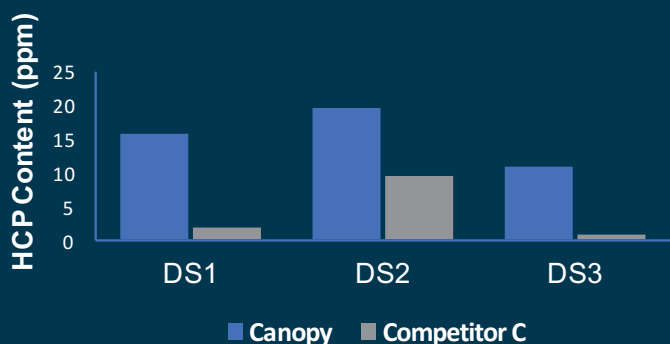
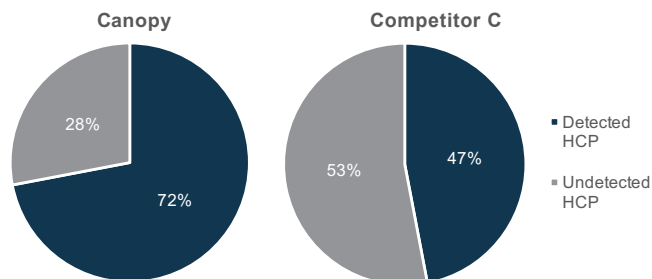


Canopy's HCP CHO Detection antibody compared to the leading competitor

Coverage

Canopy's CHO HCP antibody was tested under similar conditions as Competitor C's 3G CHO HCP antibody using 2D western blot analysis. Results indicate **Canopy's antibody has 25% more coverage.**

Berkelman, T., Harbers, A. and bandhakavi, S. Biorad Bulletin 6393. Wang, X. Unpublished data.



HCP Detection

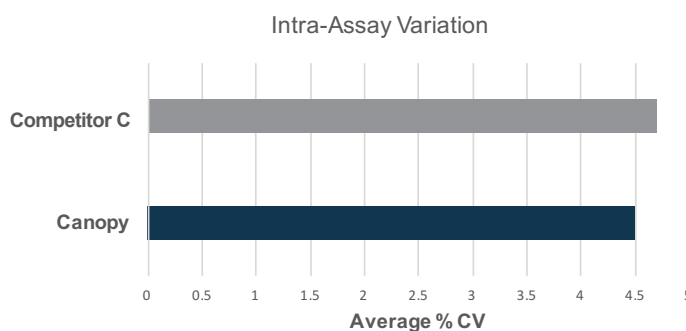
The amount of HCP present in three different DSs (therapeutic antibodies, produced by CHO) was assessed by both the Canopy CHO HCP kit and the Competitor C's 3G kit. **Canopy's antibody detected 2-8 fold more HCPs.**

Fas, S. BioPharmaceutical Emerging Best Practices Association. 2014

Intra-Assay Validation

Canopy's CHO HCP antibody exhibited **less intra-assay variation** than Competitor C's anti-body.

Delston, R. Unpublished data.



Standard (ng/ml)	Mean OD Values			Overall Mean	Standard Deviation	% CV
	Lot 1	Lot 2	Lot 3			
90	2.22	2.22	2.44	2.29	0.12	5
30	1.10	1.03	1.17	1.10	0.06	6
10	0.53	0.49	0.61	0.55	0.05	9

Delston, R. Unpublished data.

Lot-to-Lot Variability

Lot-to-lot variation was assessed using 3 different lots against 90, 30 and 10 ng/ml. Lot-to-lot variation was negligible for the Canopy antibody.

www.canopybiosciences.com
4320 Forest Park Ave.
St. Louis, MO 63108

